

HUMAN HEALTH

ENVIRONMENTAL HEALTH

TAKE THE EXPRESS TO
DNA SEQUENCING
PRODUCTIVITY

Your Express Solution for Next Generation Sequencing Library Preparation

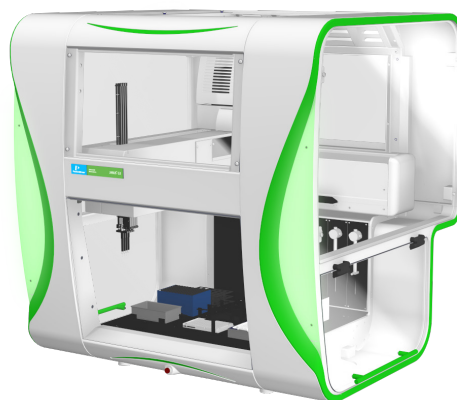
Reproducible sample preparation is the key to high quality data for next-generation sequencing (NGS) workflows. With automated sample preparation, you can increase the quality of your NGS libraries and lower your overall costs, while eliminating tedious repetitive procedures.

The JANUS® G3 NGS Express workstation is a benchtop platform to accommodate low-to-moderate throughput capacity for NGS library generation. It uses an intuitive interface to guide users through protocol selection and deck setup, as well as, displays in-run status and details. An optional enclosure not only helps to minimize sample contamination, but the easy to read status lights provide visual feedback for true walkaway sample preparation.

Designed for efficient sample preparation of up to 24 NGS libraries to complement benchtop sequencers such as the Ion Torrent PGM™ and MiSeq® systems. The JANUS G3 NGS Express Workstation offers more than 20 automated library preparation sequencing methods, enabling you to be running samples in the first week. Protocols are continuously being developed, updated and optimized to provide the best sample preparation experience.

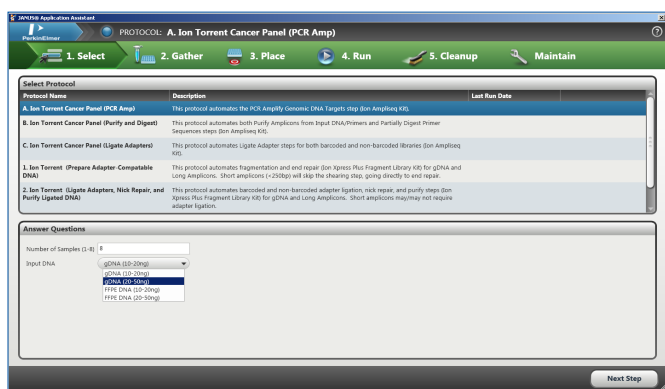
NGS Applications ideal for the JANUS G3 NGS Express Workstation include:

- Fragment library preparation
- Target capture
- Amplicon sequencing
- Sample normalization

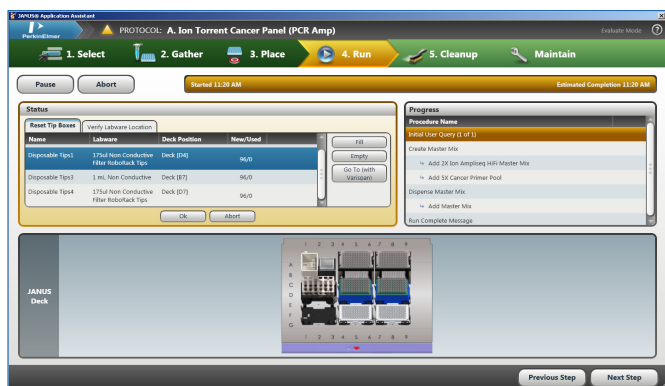


JANUS G3 NGS Express
Workstation with Enclosure (optional)

Flexible and intuitive Janus Application Assistant software enables rapid deployment of automated application protocols utilizing a simple wizard-driven interface.



Select the desired application protocol, enter the number of samples to run and select the type of input DNA.



The run-time screen displays all workstation operations allowing users to see exactly which step in the protocol is currently being executed.

A comprehensive report with run-time information and execution steps is generated at the completion of the protocol.

Our next-generation sequencing portfolio provides workflow solutions from extraction to analysis



PerkinElmer, Inc.
940 Winter Street
Waltham, MA 02451 USA
P: (800) 762-4000 or
(+1) 203-925-4602
www.perkinelmer.com

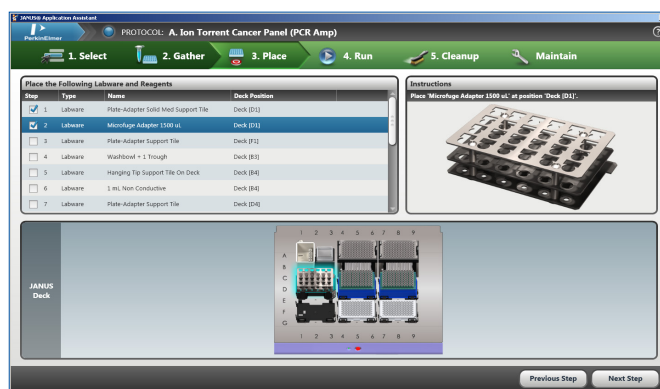


For a complete listing of our global offices, visit www.perkinelmer.com/ContactUs

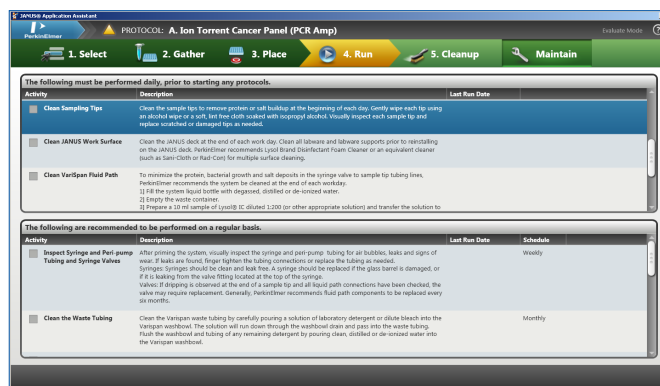
Copyright ©2012-2016, PerkinElmer, Inc. All rights reserved. PerkinElmer® is a registered trademark of PerkinElmer, Inc. All other trademarks are the property of their respective owners.

010189A_01

PKI



The application assistant guides the placement of necessary labware with intuitive positioning callouts and confirmation checklists.



Procedures for sample removal and workstation cleanup are detailed with confirmation checklists.